

Don District Salmon Fishery Board

AGM

Chairman's Remarks 25th Oct 2011

CONTENT

- Board Constitution
- The Vision
- Goals & Objectives
- The major challenge
- Historical statistics
- 2011 Activities
- 2012 Goals



The Board

- Jon Davison (Castle Forbes)
- Bob Dey (ADAA)
- David Smart (Various)
- Rick Fyffe (Fetternear)
- John Riley (Semeil)
- Frances Russell (Moonhaugh & Bandle, Waterside)
- John Sutherland (Various)
- Jim Stevenson (Aberdeenshire Council)

Upper Proprietor

- Dave Gordon (ADAA)

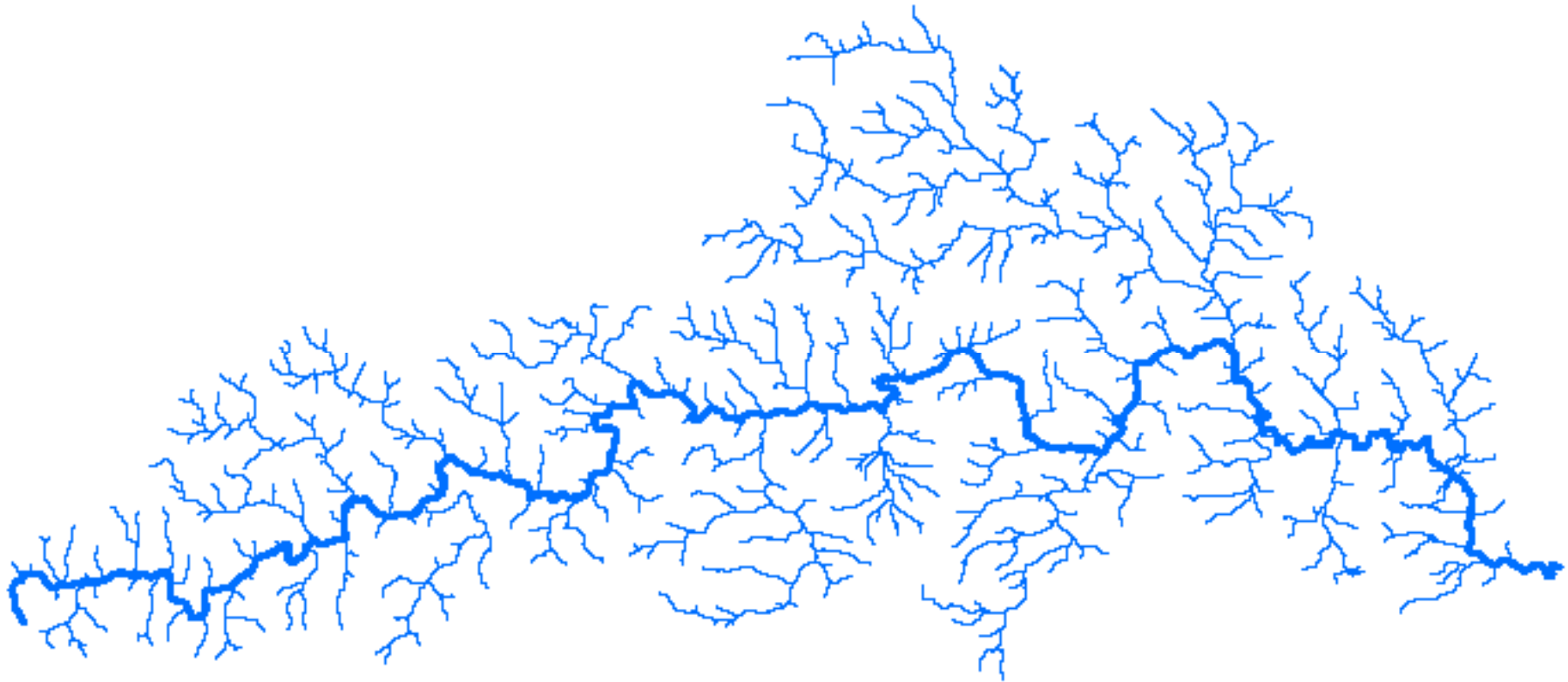
Lower Proprietor

- Alex Paterson
 - Anglers co-opted representative
- David Ogilvie
 - SEPA representative

Representatives

 **Protection and improvement of salmon and fisheries**

The Vision



 **Healthy, open and accessible river**

STRATEGIC GOALS & OBJECTIVES

- A HEALTHY RIVER

- **Creating the right habitat for spawning and parr survival**

- Removing debris and blockages
 - Eradication of non-native invasive species
 - Controlling predation (Mink, Goosander, Cormorant)
 - Keeping Gyrodactylus Salaris, killer shrimp and American crayfish out

- AN OPEN RIVER (Hassle free migration)

- **Working with Councils and SEPA on existing and future barriers to migration.**

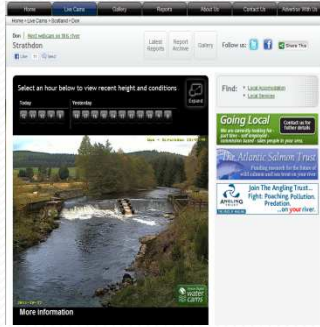
- Removal of dams, weirs and fords and/or installation of fish passes
 - Challenging and influencing but not obstructing installation of hydro power.
 - Involvement in applications for onshore and offshore wind farms

- AN ACCESSIBLE RIVER

- **Fishing readily available at affordable prices**

- Development of fishDon to include in excess of 50 beats.
 - PR campaigns in local and national publications
 - Developing river initiatives – eg Webcams, river map and website
 - Getting local hotels, pubs and restaurants linked in to our story.

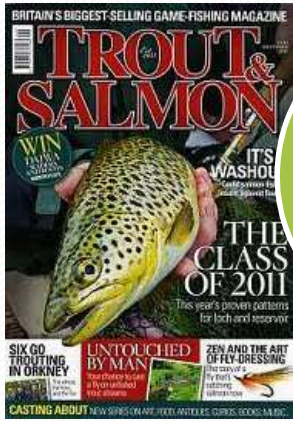
Win-Win spiral!



Good river with available fishing (HOA)



Good PR



5500

A screenshot of the 'FishDon' website. It displays search results for fishing locations, including details about 'MAYNOR & SEA FISHERY' and 'MAYNOR TROUT & CRYSTAL'. The page includes filters for date, price, and area of rivers.

Anglers respond and buy fishing

More fish caught



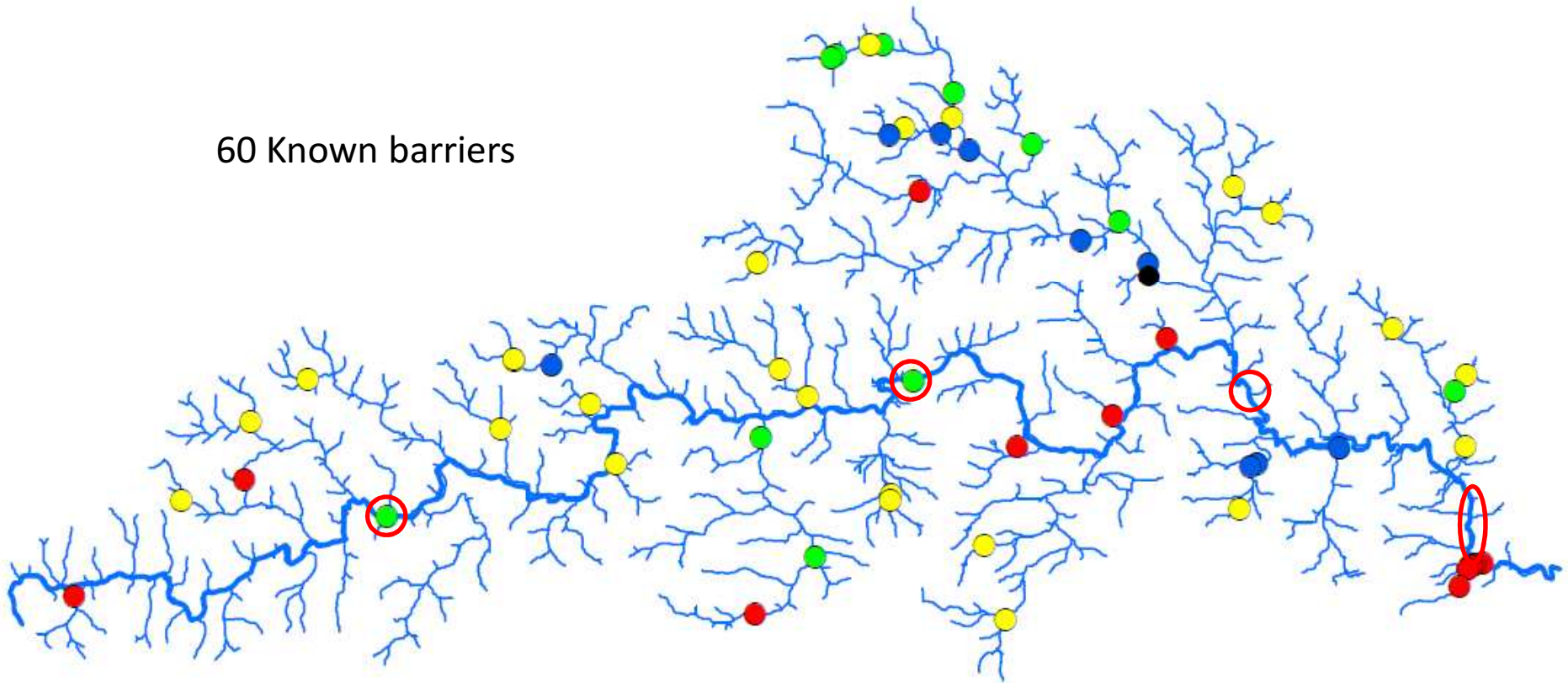
Profit for Owners, clubs and local amenities



The major challenge

OBSTACLES TO MIGRATION

60 Known barriers

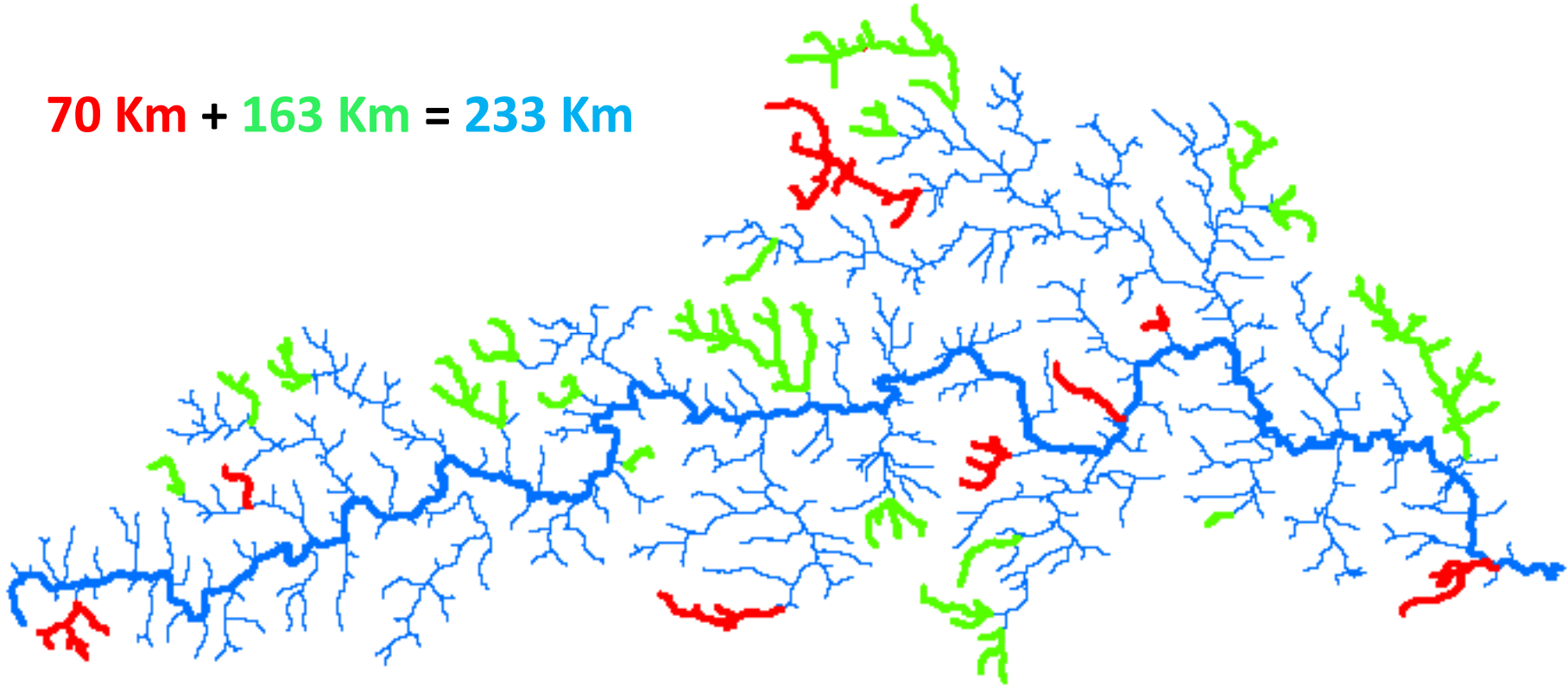


● Impassable ● Poor ● Moderate ● Moderate/OK

THE PRIZE

Removal of obstacles classified as Impassable or Poor (30)

70 Km + 163 Km = 233 Km



21% gain
in habitat

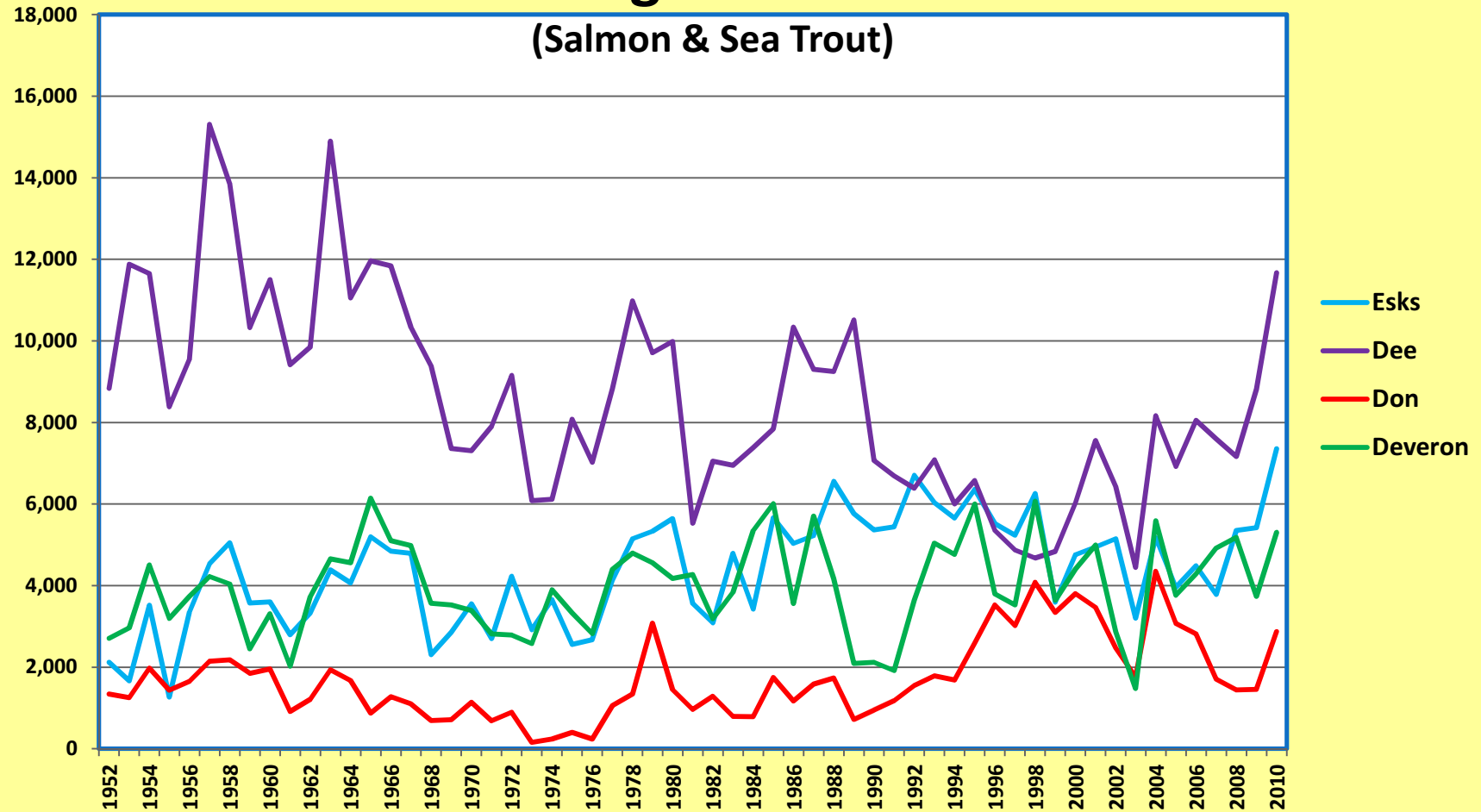


More redds
Parr survival up
More returning salmon

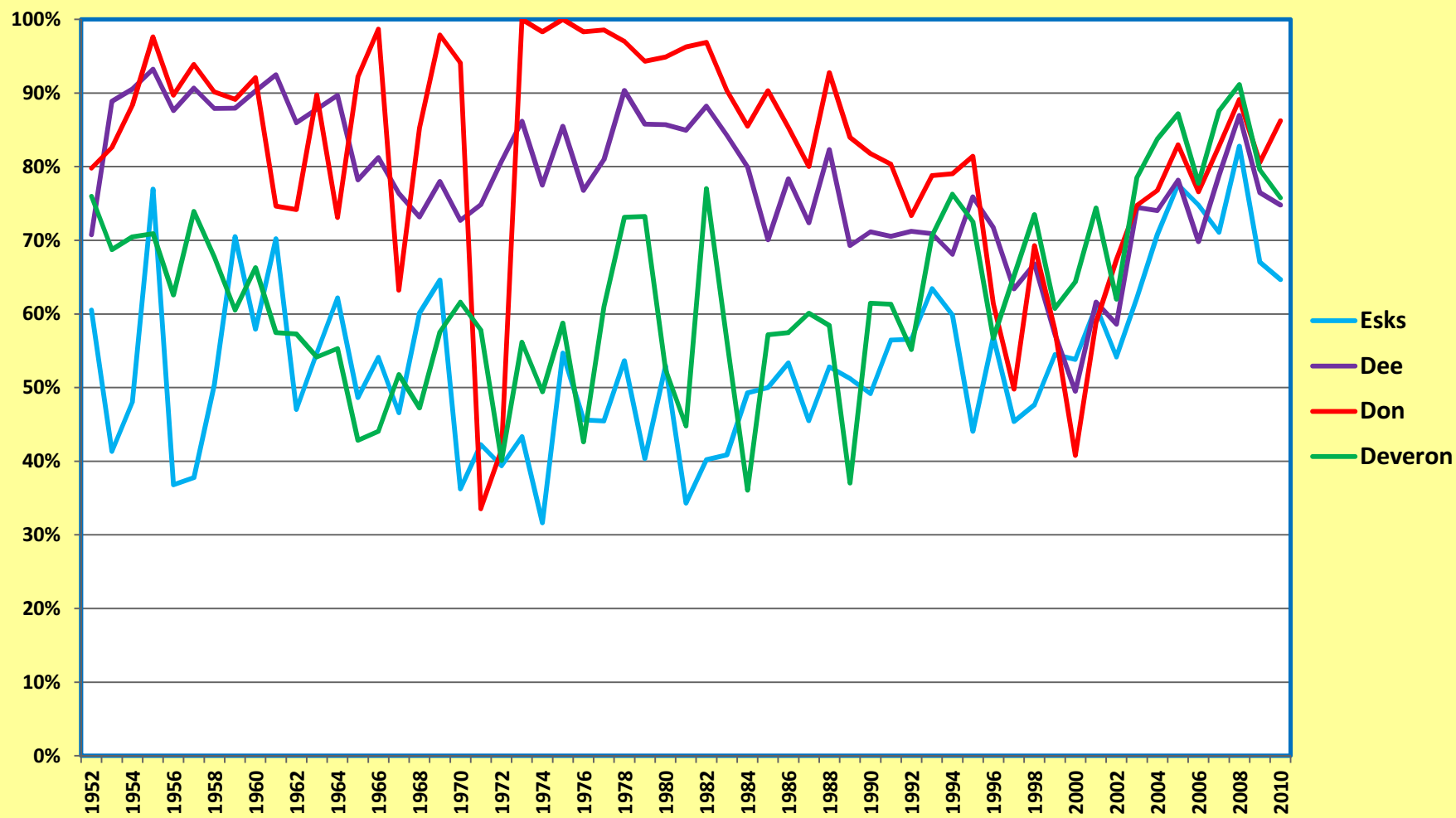


Hatchery closed

Total Rod caught fish 1952 - 2010



% Salmon v. Sea Trout 1952 - 2010



2011 Board Activities

- 4 Hydro Applications
- 4 Onshore Wind applications
- 1 Offshore wind applications
- SGN River crossings
- Meetings with SEPA, AC & ACC
- Attendance at ASFB & RAFTS meetings
- Proprietor engagement
- New bailiff and Bailiffs working with RDT

2012 Goals

- 2-3 small fords removed
- 1 fish pass installed
- Contain expenditure to current level (below inflation increase)
- 10 additional fisheries on FishDon
- Support RDT fund raising event – ideas?
- More engagement with proprietors.
- Develop Metrics to measure success

Cause for optimism?

- **Got the infrastructure**

- 6th Largest catchment area in Scotland – so big enough river to support many many more salmon & Sea Trout

- **Got the data**

- Not even started on physical restoration programme – so can only get better

- **Got the Brown Trout**

- Already best brown trout river in UK so basis for huge Sea Trout runs

- **Got the potential**

- Hugely under fished - 35% of SERAD catch returns show NIL fish caught

- **Got the weapons**

- Attacking predators

- **Got the PR campaign rolling**

- Trout & Salmon, FF & FT, FishDon, WebCams, P&J



Contact

boardchairman@riverdon.org.uk

